



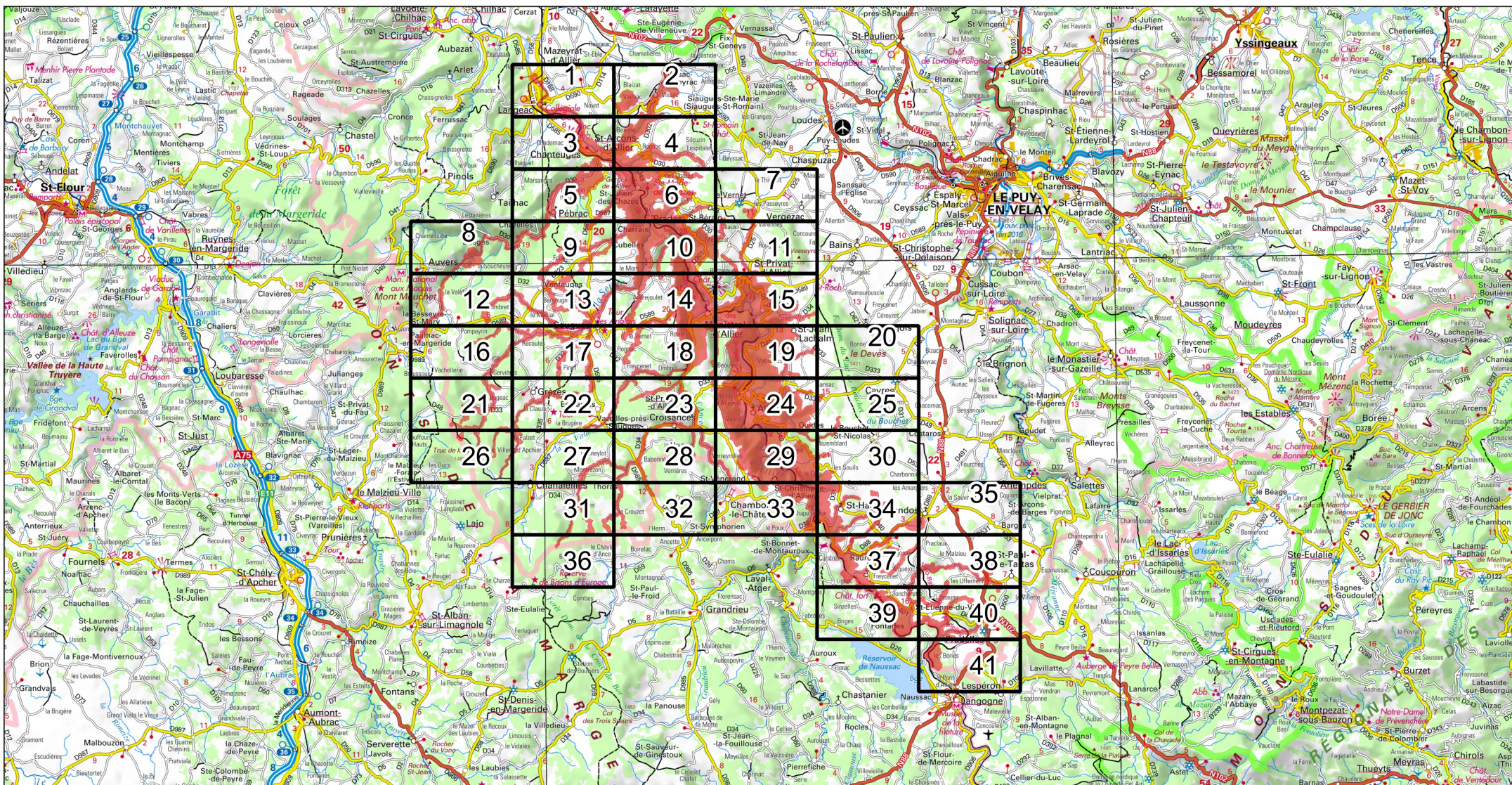
Site Natura 2000 : "GORGES DE L'ALLIER ET AFFLUENTS" - FR8301075


Département Haute-Loire, Région Auvergne-Rhône-Alpes

Carte d'assemblage au 1/ 370 000ème et 41 cartes au 1/25 000ème annexées à l'arrêté de désignation de la zone spéciale de conservation (ZSC)

MINISTÈRE
DE LA TRANSITION
ÉCOLOGIQUE
ET SOLIDAIRE

signé le :



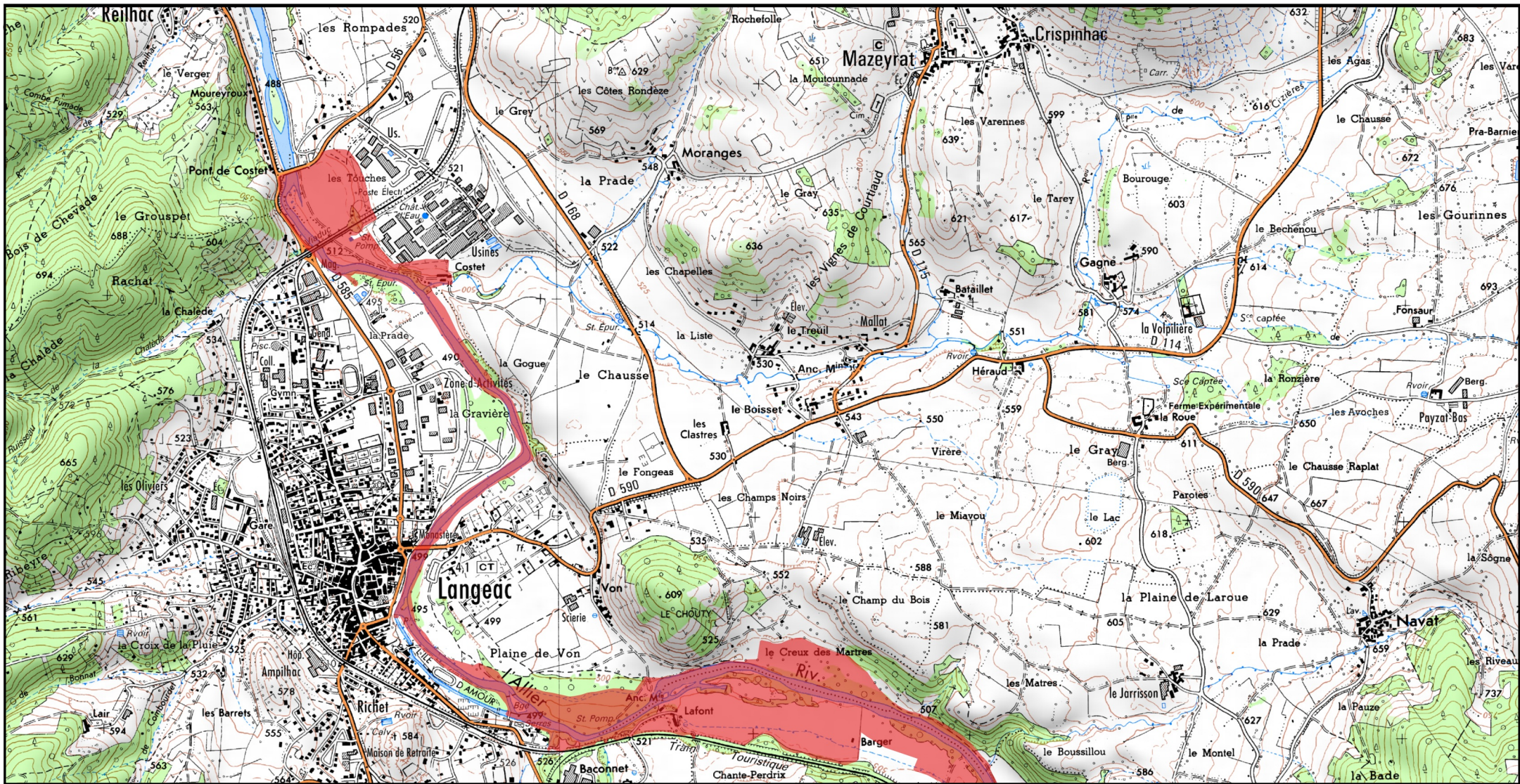
 Zone Spéciale de Conservation (ZSC)




1/370 000ème

Fond : Scan 250 IGN © - Données DREAL Auvergne-Rhône-Alpes 2018

Auteur : DREAL Auvergne-Rhône-Alpes 03-09-2018



 Zone Spéciale de Conservation (ZSC)

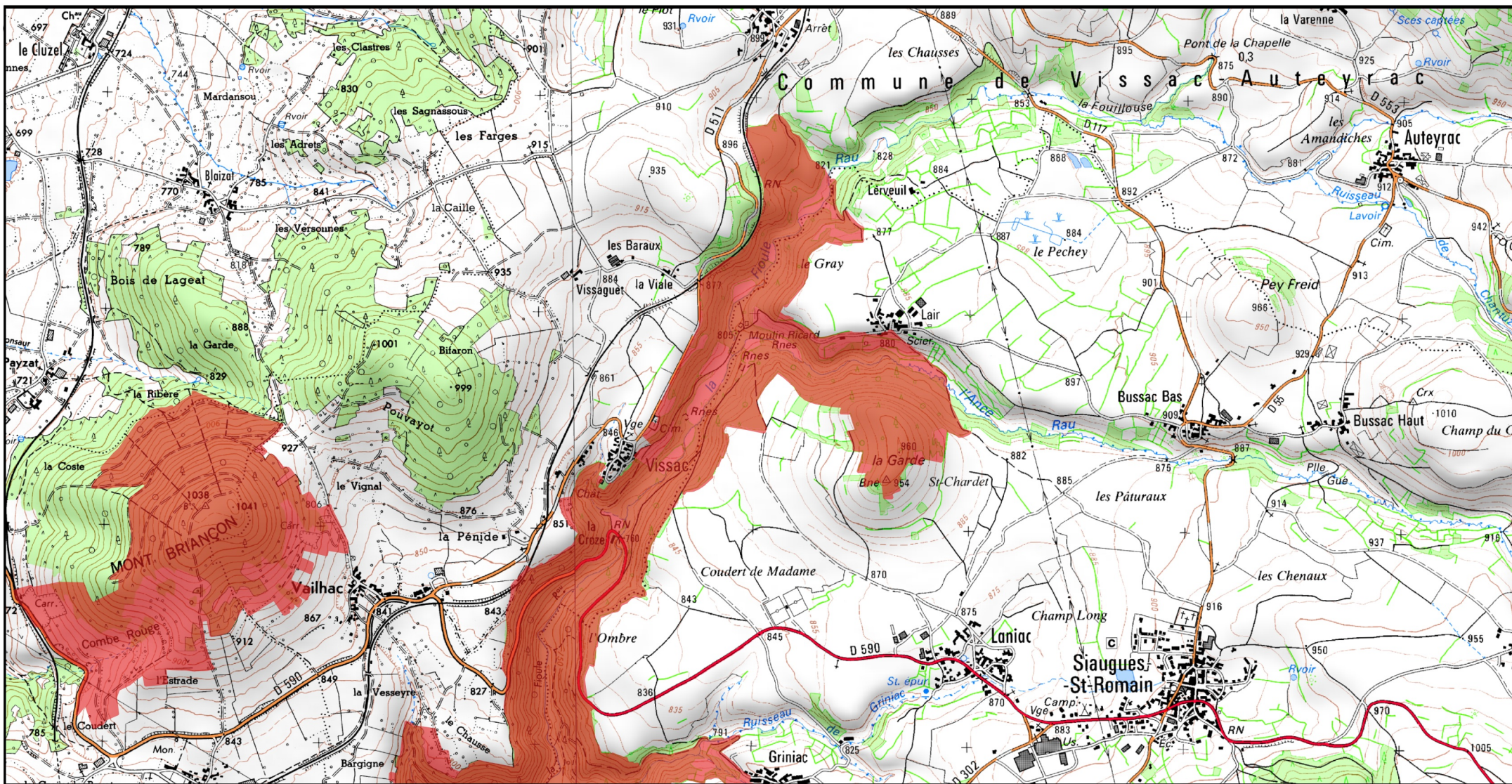



0 0.5 1 km

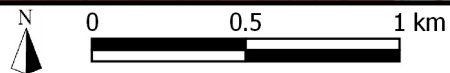
1/25 000 ème

Fond : Scan 25 IGN © - Données DREAL Auvergne-Rhône-Alpes 2018

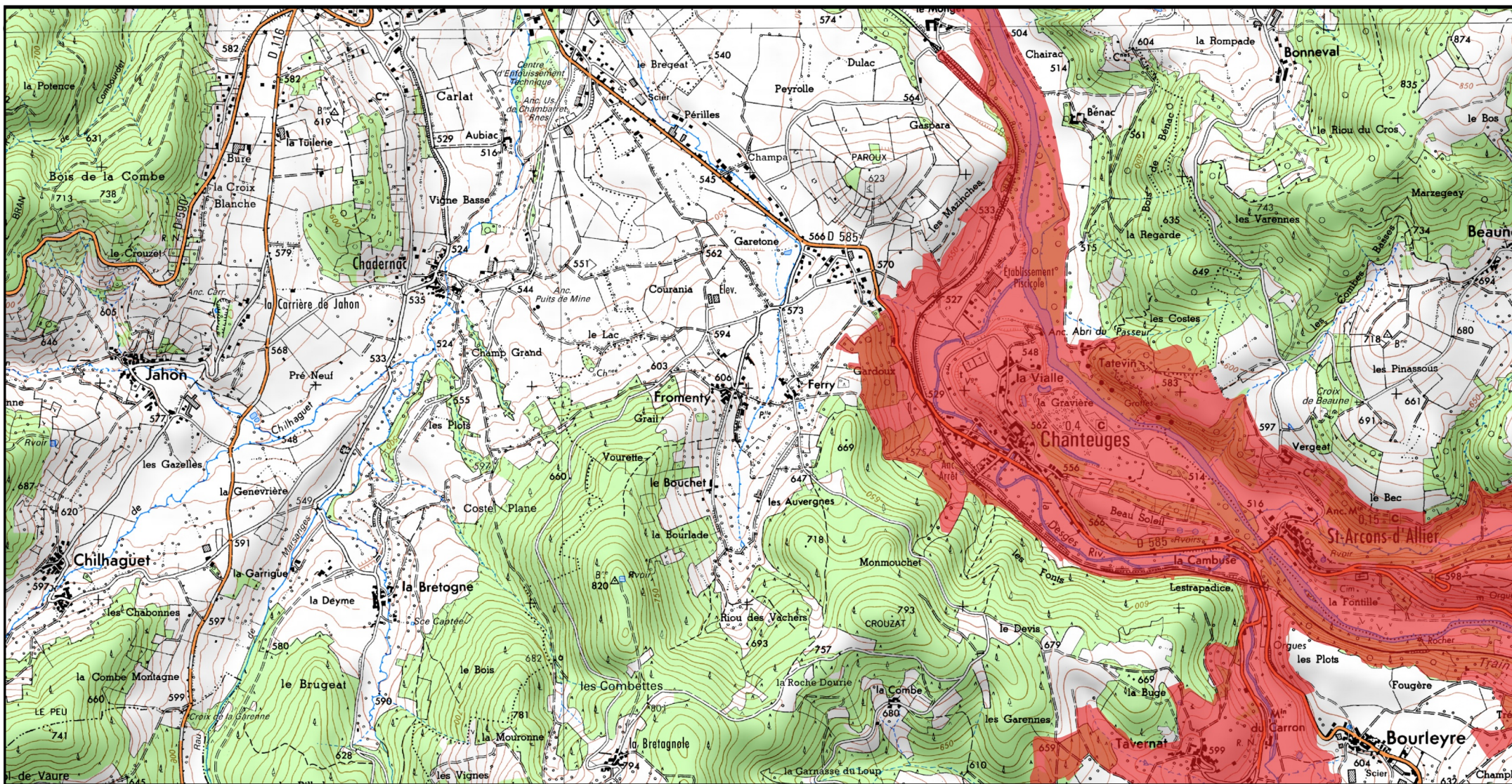
Auteur : DREAL Auvergne-Rhône-Alpes 03-09-2018

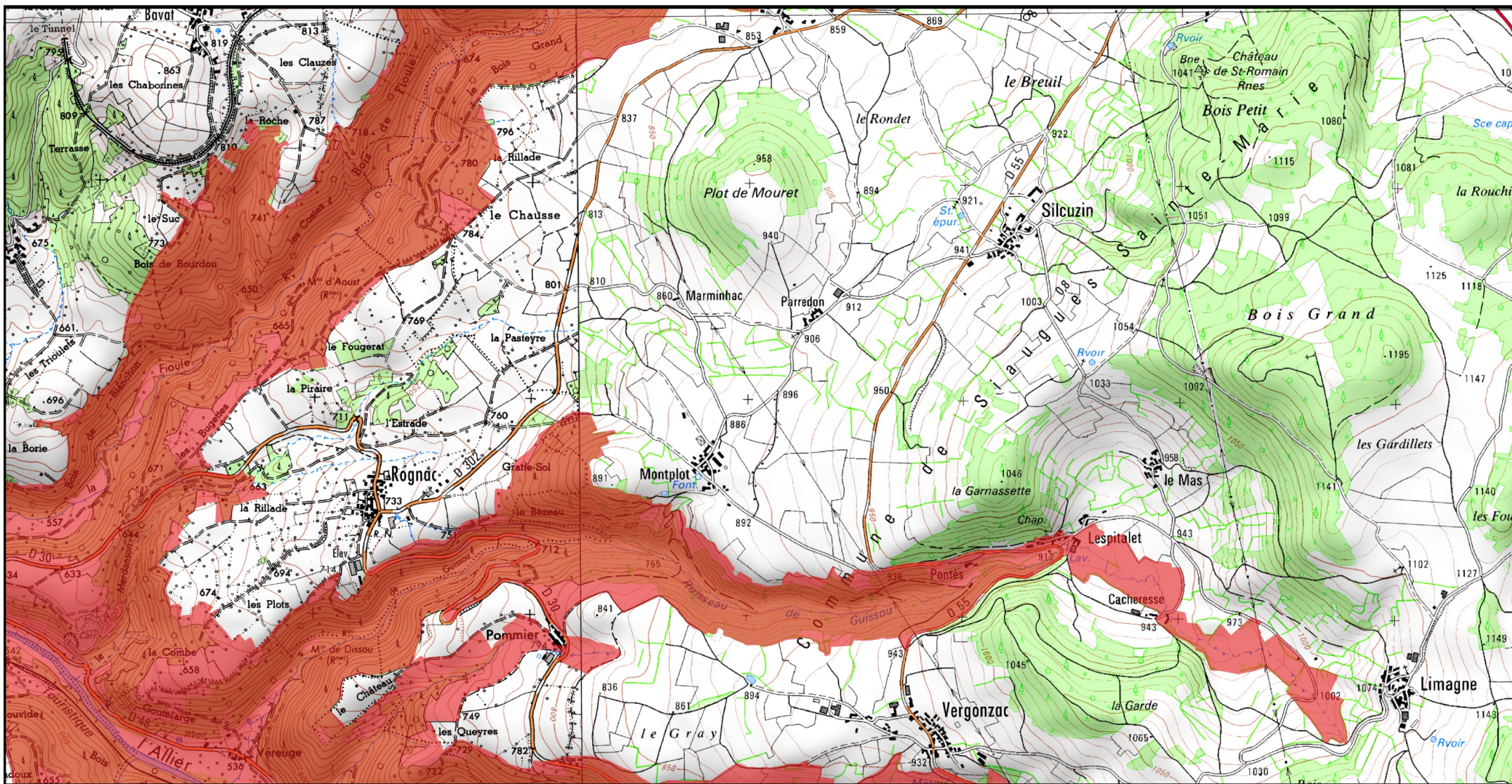


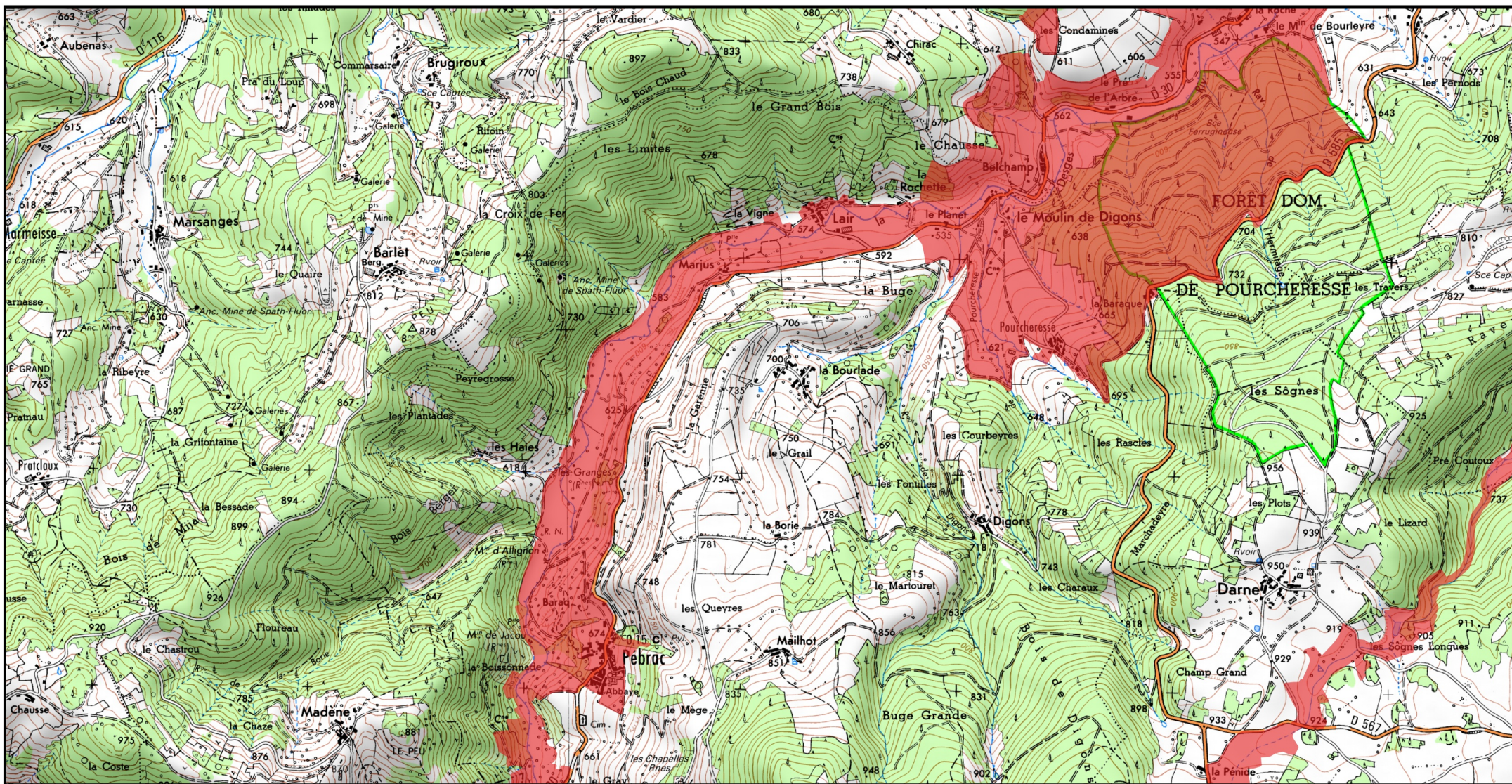
 Zone Spéciale de Conservation (ZSC)




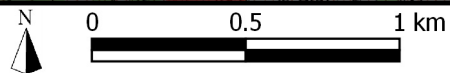
1/25 000 ème



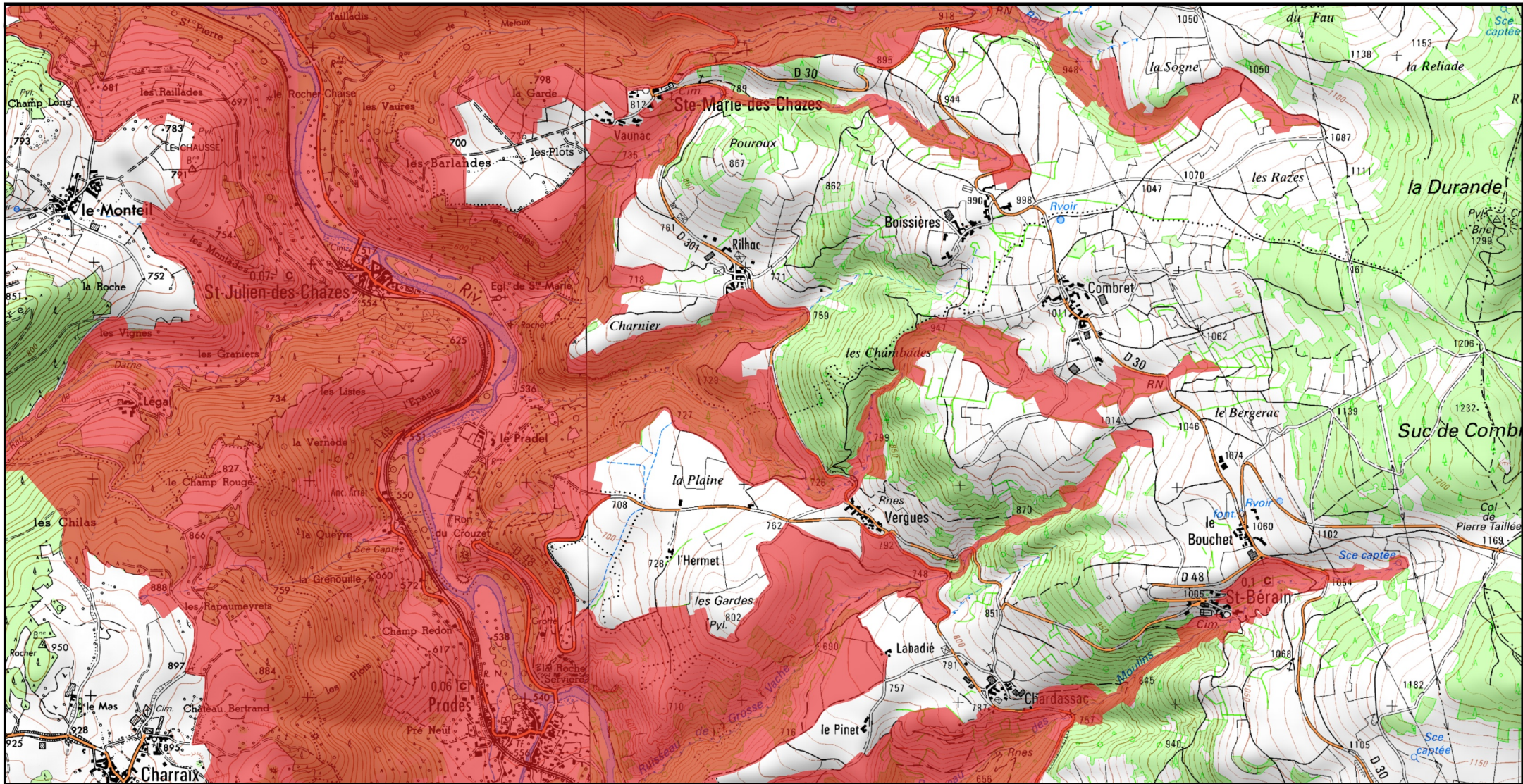





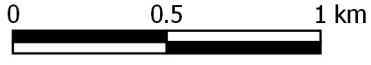
 Zone Spéciale de Conservation (ZSC)



1/25 000 ème



 Zone Spéciale de Conservation (ZSC)



1/25 000 ème

Fond : Scan 25 IGN © - Données DREAL Auvergne-Rhône-Alpes 2018

Auteur : DREAL Auvergne-Rhône-Alpes 03-09-2018